

monkeyhaven
primate • rescue • centre



SCHOOL GUIDE

FOR
TEACHERS



INSIDE...



YOUR DAY, YOUR WAY



OUR FAB FACILITIES



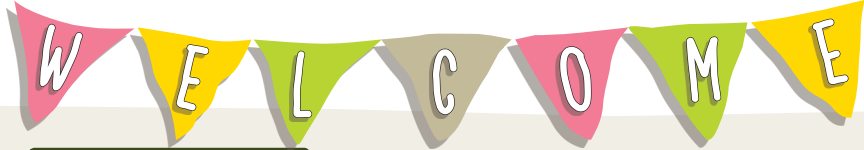
PRIMATES



OWLS



Registered Charity
Number 1153254



monkeyhaven
primate • rescue • centre



Monkey Haven
Staplers Road
Newport
Isle of Wight
PO30 2NB

www.monkeyhaven.org
Email: hello@monkeyhaven.org

Tel: 01983 530885

Dear teacher,

Welcome to Monkey Haven, an award winning animal sanctuary with charity status – and also the most popular attraction on the Island, according to TripAdvisor. We are also VisitEngland's top small attraction in the country.

This is a happy home for rescued primates and birds of prey. We care for monkeys, owls, meerkats and many more exotic creatures.

We love showing school parties around and it's our mission to ensure that you have lots of fun, while learning all about the serious work that we do helping animals in crisis. We are also keen to raise awareness of the plight of animals in the wild, facing threats including deforestation and poaching.

We can offer you a free general tour and a 'Meet the Owls and Reptiles' talk or focus on your particular interests. Topics that we could cover include conservation, rainforests, evolution and animal behaviour. You can let us know any preferences on the booking form or give us a call to talk through your ideas. School parties have exclusive access to our new Education Lodge which has lots of resources and gives you somewhere to store your bags.

If you have any questions before your visit, please get in touch. We look forward to seeing you soon!

Love all the staff at Monkey Haven x

CONTENTS

PRACTICAL INFO

YOUR DAY, YOUR WAY – PAGE 3
OUR FAB FACILITIES – PAGE 4
ADMISSION PRICES – PAGE 5

BIT OF BACKGROUND

WHAT'S THE POINT OF MONKEY HAVEN? – PAGE 6
MONKEYS – PAGE 7
OWLS – PAGE 8

YOUR DAY YOUR WAY

3



YOU CAN CHOOSE HOW YOU WANT TO SPEND YOUR TIME HERE – AND WE WILL GIVE YOU PLENTY OF SUGGESTIONS. TO GIVE YOU THE IDEA, THIS IS HOW YOUR DAY COULD SHAPE UP...



10AM Arrive at the Haven to be greeted by staff. You'll be assigned one of our education officers, who will give you an introductory talk explaining what we're about and answer any questions. We've had lots of experience showing school parties around, and will pitch the discussions at the right level for your students.

10.30AM Guided tour of Monkey Haven, giving you the chance to hear all about our amazing animals and how they came to be here. We'll also introduce you to one of our hand reared owls and the children can even stroke a bird. Plus we'll show you our small collection of reptiles, including snakes and our Stick Insects.

12.30PM Lunch! Bring your own tuck or head for Xhabu's Tea Room – please let us know in advance if you would like us to prepare packed lunches for your students.

1.30PM Explore the park by yourselves or head for the Education Lodge for your own activities. We can provide worksheets with suggested things to do.

2.30PM Go crazy in the adventure play areas.

3PM Home time (via the gift shop, of course!).



OUR FAB FACILITIES



YOUR OWN CLASSROOM



We've got great facilities for schools, including a heated Education Lodge which will be your classroom for the day.

It's packed with resources. Feel free to use the Lodge as you want, and store your bags here.

LUNCH OPTIONS



Bring your own food – and eat in the Education Lodge. Alternatively, dine al fresco on our picnic benches.

Xhabu's Tea Room also sells a good selection of hot and cold drinks, ice cream, sandwiches and snacks.

DISABLED ACCESS



We have full disabled access throughout the park and the paths are wide and flat.

PLAYTIME FUN



Children love our play areas – so let them run wild at Funky Monkeys (5s and over) and Cheeky Monkeys (under 5s).

Plus...

- ✓ Toilets (including disabled toilets)
- ✓ Handwashing facilities next to the Education Lodge
- ✓ Baby changing rooms
- ✓ Gift shop with pocket money toys

Risk Assessment:

We can provide a risk assessment for your records – or you are welcome to conduct your own.

'The children at Dover Park Primary School had a great day. Lilymae took us on a tour and gave us an absolutely amazing talk about owls. I was so impressed with how informative she was and how she adapted her language so it was age appropriate for the children. She was so accommodating and made us feel really welcome. I will definitely be booking again and just wanted to say a massive thank you.'

SCHOOL ADMISSION PRICES

CHILD/STUDENT: £7

INCLUDES FREE 'MEET THE OWLS AND REPTILES' GUIDED TALK FOR YOUR SCHOOL

TEACHERS: FREE

COACH DRIVERS: FREE

PLEASE GET IN TOUCH WITH ANY QUESTIONS OR TO MAKE A BOOKING.

EMAIL: EDUCATION@MONKEYHAVEN.ORG TEL: 01983 530885
MONKEY HAVEN, STAPLERS ROAD, NEWPORT, ISLE OF WIGHT PO30 2NB

MONKEYHAVEN.ORG

CHOOSE ME

WHY NOT ADOPT ONE OF OUR ANIMALS FOR YOUR CLASS?

FROM JUST £10 FOR A YEAR,
YOU'LL GET A CERTIFICATE AND
THE PROCEEDS WILL GO TOWARDS
THE ANIMAL'S UPKEEP.

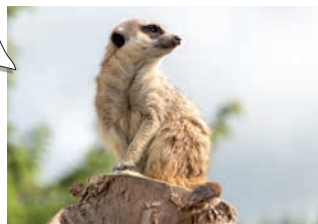


WHAT'S THE POINT OF MONKEY HAVEN?

WE GIVE ALL OUR ANIMALS THE CHANCE TO LIVE HAPPY, ENRICHED LIVES IN PEACEFUL SURROUNDINGS. HERE ARE THREE OF THE MAIN REASONS THAT THE CREATURES COME TO BE HERE...

1. THEY WERE RESCUED FROM THE CRUEL PET TRADE

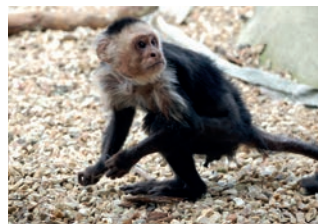
Our meerkats used to be kept as pets in unsuitable conditions and still bear the scars. One of them has lost his tail, which could be because his hutch was too small or he bit it off out of boredom.



2. THEY FAILED TO THRIVE AT OTHER ZOOS

Perhaps they were bullied by other animals and needed to move to thrive and make new friends.

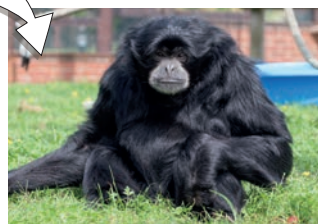
Sweet little Peppino was snatched from the wild by poachers and sold into the pet trade, before he was rescued. However attempts to integrate him into various zoos failed, as he was always attacked and pushed out. He has finally found happiness here.



3. THEY ARE UNSUITABLE FOR BREEDING PROGRAMMES

If we care for these animals, then this gives zoos more space for animals that are important for conservation.

Cross-eyed Xhabu, our beautiful Siamang gibbon, is unsuitable for breeding programmes due to a range of disabilities – but our visitors adore the cheeky chap (and so do we)!



FURRY FACT

OUR BEAUTIFUL COLOBUS MONKEYS HAVE A FURRY 'CAPE' THAT ACTS AS A PARACHUTE TO HELP THEM GLIDE THROUGH THE TREES. HOWEVER THEIR DISTINCTIVE GOOD LOOKS HAVE MADE THEM A TARGET FOR POACHERS – AND IN SOME COUNTRIES, THEIR TAILS ARE USED AS FLY SWATTERS.



PRIMATES



SOMER & RASMAYA
THE LAR GIBBONS

OUR CHEEKY MONKEYS, LAZY LEMURS AND NOISY GIBBONS ARE ALL HOUSED IN LARGE, SPACIOUS ENCLOSURES. WE GIVE EACH ANIMAL EVERYTHING THEY NEED TO ENSURE THAT THEY STAY HAPPY AND HEALTHY – THAT MIGHT BE A WATERFALL, CLIMBING FRAME, OR LOTS OF FOLIAGE TO PLAY AROUND IN.

Our diverse primate collection is the largest on the Isle of Wight and each species is fascinating to watch. You'll love discovering their unique personalities.

The Lar Gibbons might try and steal the show with their loud territorial singing – our resident showgirls are Somer and her mother Rasmaya. They adore showing off, playing with cardboard boxes and do all kinds of acrobatics. You'll probably hear them before you see them!

ALSO LOOK OUT FOR

THE CHEEKY RHESUS MACAQUES use a variety of facial expressions to communicate, including grimacing (to show fear), chirping (when they find a really tasty bit of food) and screaming (to demonstrate aggression). Experts from Portsmouth University are studying our monkeys to look at their forms of communication.

OUR TROOP OF BARBARY MACAQUES were rescued from the illegal pet trade – this sociable bunch love grooming and playing, and will devise imaginative games from simple props like a plastic cup or towel.



SPOK THE RHESUS MACAQUE

OWLS & OTHER BIRDS

KETCH THE EAGLE OWL

WE'RE NOT JUST MAD ABOUT MONKEYS, YOU KNOW!
THE HAVEN IS ALSO HOME TO VARIOUS SPECIES OF
OWL, FROM THE BRIGHT WHITE ARCTIC SNOWY OWL
TO THE TINY AUSTRALIAN BOOBOOK.

We're crazy about other types of birds, too. Kookie the Kookaburra is one of the noisiest and cheekiest creatures you'll ever meet – he likes a joke and finds visitors very amusing, so don't be offended if he laughs at you!



KOOKIE THE KOOKABURRA



BEAU THE TAWNY OWL

Many of our birds have come from zoos and private collections. Others were injured or rescued native birds from the wild. We have a 'rescue and release' policy – so that wherever possible, we care for the birds until they are well enough to be released back into the countryside.

WE HOPE TO SEE YOU SOON!

monkeyhaven.org Tel 01983 530885

Staplers Road, Newport, Isle of Wight PO30 2NB

monkeyhaven
primate • rescue • centre

Registered Charity Number 1153254